

## Tippette Switches



The Tippette Series is a traditionally styled rocker switch, available in sealed or unsealed versions. These switches are appropriate for use in those applications not requiring the more stringent sealing protection of the V-Series and L-Series switches. The Tippette Series is available in both illuminated and non-illuminated versions and features a wide variety of circuits, actuator styles and bracket options. This versatile offering includes international agency certifications and ratings to 26 amps for select circuits.

### Electrical

Contact Rating . . . . .	15 amps, 125 VAC 10 amps, 250 VAC 3/4 HP 125-250 VAC 15 amps, 12-30 VDC
Life . . . . .	25,000 cycles circuit dependent 50,000 cycles circuit dependent consult factory for applicable circuits.
Contacts . . . . .	Fine silver, silver cad-oxide
Terminals . . . . .	Brass or copper/silver plate 1/4" (6.3mm) Quick Connect terminations standard. Solder lug - Brass Tin Plated Wire Lead 16 gauge standard 105°C 600VAC Screw Terminals - Brass

### Mechanical

Endurance . . . . .	100,000 cycles minimum
---------------------	------------------------

### Physical

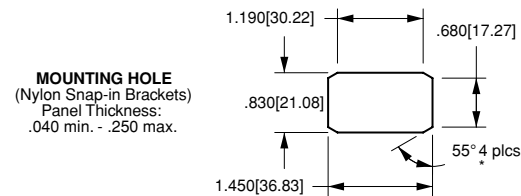
Lighted . . . . .	Incandescent - rated 10,000 hours Neon - rated 25,000 hours
Seals . . . . .	Bracket - Actuator WBL/MBL optional external gasket panel seal
Base . . . . .	Phenolic (150°C)
Rocker/Bracket . . . . .	Nylon 66 (105°C)

### Agency Certifications



Select circuits and constructions with IEC approvals are available. Consult factory.

### Mounting



\*Angled corners are suggested for optimum fit.  
Standard rectangular cutout is acceptable.

**TIGA51 - 6M - BL - MBL**

<sup>1</sup>  
Base Part Number

<sup>2</sup>  
Actuator Style

<sup>3</sup>  
Actuator Color

<sup>4</sup>  
Bracket

**1 BASE PART NUMBER: SERIES/POLES/CIRCUITRY<sup>8, 11, 13</sup>/RATING<sup>7</sup>/TERMINATION<sup>10</sup>**

**10A 250VAC, 15A 125VAC, 3/4 HP 125-250VAC, 15A 6-28VDC<sup>9</sup>**

**Single Pole in Double Pole base<sup>2</sup>**

solder lug	.250 tab	screw term.	wire leads
TIGA50	TIGA51	TIGA54	TIGA55
TIGA5A	TIGA5B	TIGA5E	TIGA5F
TIGA5L	TIGA5M	TIGA5S	TIGA5T
TIGB50	TIGB51	TIGB54	TIGB55
TIGB5A	TIGB5B	TIGB5E	TIGB5F
TIGC50	TIGC51	TIGC54	TIGC55
TIGC5A	TIGC5B	TIGC5E	TIGC5F
TIGC5L	TIGC5M	TIGC5S	TIGC5T

ON-NONE-OFF  
(ON)-NONE-OFF  
ON-NONE-(OFF)  
ON-NONE-ON  
ON-NONE-(ON)  
ON-OFF-ON  
ON--OFF-(ON)  
(ON)-OFF-(ON)

**Three Pole**

solder lug	.250 tab	screw term.	wire leads
TIHK50	TIHK51	TIHK54	TIHK55
TIHK5A	TIHK5B	TIHK5E	TIHK5F
TIHK5L	TIHK5M	TIHK5S	TIHK5T
TIHL50	TIHL51	TIHL54	TIHL55
TIHL5A	TIHL5B	TIHL5E	TIHL5F
TIHM50	TIHM51	TIHM54	TIHM55
TIHM5A	TIHM5B	TIHM5E	TIHM5F
TIHM5L	TIHM5M	TIHM5S	TIHM5T

ON-NONE-OFF	ON-NONE-OFF	ON-NONE-(OFF)	ON-NONE-ON	ON-NONE-(ON)	ON-OFF-ON	ON--OFF-(ON)	(ON)-OFF-(ON)
-------------	-------------	---------------	------------	--------------	-----------	--------------	---------------

**VDE APPROVED**

**10A 250VAC, 15A 125VAC, 12(6)A 250VAC T85**

**Single Pole in Double Pole base<sup>2</sup>**

solder lug	.250 tab	wire lead
TIGA90	TIGA91	TIGA95
TIGB90	TIGB91	TIGB95
TIGC90	TIGC91	TIGC95

ON-NONE-OFF
ON-NONE-ON
ON-OFF-ON

**Double Pole**

solder lug	.250 tab	screw term.	wire leads
TIGK50	TIGK51	TIGK54	TIGK55
TIGK5A	TIGK5B	TIGK5E	TIGK5F
TIGK5L	TIGK5M	TIGK5S	TIGK5T
TIGL50	TIGL51	TIGL54	TIGL55
TIGL5A	TIGL5B	TIGL5E	TIGL5F
TIGM50	TIGM51	TIGM54	TIGM55
TIGM5A	TIGM5B	TIGM5E	TIGM5F
TIGM5L	TIGM5M	TIGM5S	TIGM5T

**Four Pole**

solder lug	.250 tab	screw term.	wire leads
TIHK50	TIHK51	TIHK54	TIHK55
TIHK5A	TIHK5B	TIHK5E	TIHK5F
TIHK5L	TIHK5M	TIHK5S	TIHK5T
TIHL50	TIHL51	TIHL54	TIHL55
TIHL5A	TIHL5B	TIHL5E	TIHL5F
TIHM50	TIHM51	TIHM54	TIHM55
TIHM5A	TIHM5B	TIHM5E	TIHM5F
TIHM5L	TIHM5M	TIHM5S	TIHM5T

**Additional ratings up to 20A 125-277VAC, 1 1/2HP 125 VAC, 2HP 250VAC are available.**

**Consult factory for specifics.**

**2 ACTUATOR STYLE**

1S	Angular/Smooth Face Gloss <sup>12</sup>
1C	Angular/Cross Serations Gloss <sup>12</sup>
1F	Flatted/Smooth Face Gloss <sup>12</sup>
1L	Angular/Longline Serations Gloss <sup>1, 12</sup>
2L	Long Smooth/Narrow <sup>16</sup>

6M	Curved/Smooth Face Matte <sup>3</sup>
6S	Curved/Smooth Face Gloss <sup>3</sup>
7S	Rounded Paddle/Smooth Face Gloss <sup>1</sup>
7N	Witch's Hat/Narrow <sup>15</sup>
7P	Witch's Hat/Wide <sup>15</sup>

**3 ACTUATOR COLOR<sup>9</sup>**

BL black WH white RD red

**4 BRACKET STYLE<sup>9</sup>**

A	Screw Mount <sup>5</sup>
B	Screw Mount <sup>5, 14</sup>
C	Screw Mount <sup>5</sup>
H	Screw Mount <sup>5</sup>
NBL	Nylon Black
WBL	Watershedding Black <sup>4</sup>
MBL	Marine Style Black
FN	Metal Snap-In <sup>5</sup>
FN BLK	Black Metal Snap-In <sup>5</sup>
FN SS	Stainless Steel Snap-In <sup>5</sup>
FW	Wide Stainless Steel Snap-In <sup>5</sup>

**NOTES**

- 1 NBL, FN, & FW brackets only.
- 2 For single pole switch in a single pole base, specify TIL with single pole circuitry/rating/termination.
- 3 NBL, WBL, & MBL brackets only. With 6M actuator, brackets also will be matte finish.
- 4 6M & 6S actuators only
- 5 Not available with 6M & 6S actuators.
- 6 Consists of WBL bracket, neoprene seal, and dummy rivets at open holes. Consult factory for agency approval status. All ratings are appropriate for usage in low voltage applications.
- 7 For additional special circuits, see page 21.
- 9 Custom colors are available, consult factory.
- 10 .187 tab and PC terminations are also available. Consult factory for catalog number callout.
- 11 ( ) momentary
- 12 Not available with WBL or MBL style brackets.
- 13 Additional circuits available. See page 21.
- 14 Available with single pole TIL-Series only.
- 15 Available with bracket A, C or H only.
- 16 Not available with MBL or H brackets. Can be supplied as a double rocker to control separate poles of a TIG, TIH or TII switch. Consult factory for details.

**LTILA51 - 6M - BL - RC - MBL - 12V**

<sup>1</sup>  
Base Part Number

<sup>2</sup>  
Actuator Style

<sup>3</sup>  
Actuator Color

<sup>4</sup>  
Lens Color

<sup>5</sup>  
Bracket

<sup>6</sup>  
Lamp Voltage

**1 BASE PART NUMBER: SERIES/POLES/ILLUMINATION/CIRCUITRY<sup>12</sup>/RATING<sup>10</sup>/TERMINATION<sup>14</sup>**

**10A 250VAC, 15A 125VAC, 3/4 HP 125-250VAC, 15A 15-28VDC**

**illuminated Single Pole in Double Pole base**

solder lug	.250 tab	screw term.	wire leads
LTILA50	LTILA51	LTILA54	LTILA55
LTILA5A	LTILA5B	LTILA5E	LTILA5F
LTILA5L	LTILA5M	LTILA5S	LTILA5T
LTILB50	LTILB51	LTILB54	LTILB55
LTILB5A	LTILB5B	LTILB5E	LTILB5F
LTILC50	LTILC51	LTILC54	LTILC55
LTILC5A	LTILC5B	LTILC5E	LTILC5F
LTILC5L	LTILC5M	LTILC5S	LTILC5T

50VAC, 15A 15-28	i
base	s
	/
ON-NONE-OFF	L
(ON)-NONE-OFF	L
ON-NONE-(OFF)	L
ON-NONE-ON	L
ON-NONE-(ON)	L
ON-OFF-ON	L
ON-OFF-(ON)	L
(ON)-OFF-(ON)	L

**illuminated Double Pole**

solder lug	.250 tab	screw term.	wire leads
LTIGK50	LTIGK51	LTIGK54	LTIGK55
LTIGK5A	LTIGK5B	LTIGK5E	LTIGK5F
LTIGK5L	LTIGK5M	LTIGK5S	LTIGK5T
LTIGL50	LTIGL51	LTIGL54	LTIGL55
LTIGL5A	LTIGL5B	LTIGL5E	LTIGL5F
LTIGM50	LTIGM51	LTIGM54	LTIGM55
LTIGM5A	LTIGM5B	LTIGM5E	LTIGM5F
LTIGM5L	LTIGM5M	LTIGM5S	LTIGM5T

**Additional ratings up to 12A 250VAC, 17A 125 VAC, 3/4 HP 125 VAC, 1HP 250VAC are available.**

**Consult factory for specifics.**

**Three pole switch is also available: Substitute H for fourth digit of part number. ex. LTIHK51**

**NOTES**

- 1 NBL, FN, & FW brackets only. Double pole circuits provided with 3 pole base.
- 2 LTIL-Series with NBL, FN, & FW brackets only.
- 3 NBL, WBL, & MBL brackets only. With 6M actuator, bracket will also be matte finish.
- 4 1S, 1C, 1L & 7S with NBL bracket only available with LTIL-Series.
- 5 6M, 6S actuators only.
- 6 Not available with 6M and 6S actuators.
- 7 Not recommended with neon lamps.
- 8 Consists of WBL bracket, neoprene seal, dummy rivets at open holes. Consult factory for agency approval status.
- 9 Not recommended with blue or green lenses.
- 10 All ratings are appropriate for usage in low voltage applications.
- 11 Custom colors and additional bracket styles are available, consult factory.
- 12 ( ) - momentary
- 13 All double throw circuits supplied with two lenses. To specify two different lens colors, specify second color, after first color. (ex. LTIGM51-6S-BL-RC/GN-WBL-12V)
- 14 .187 tab and PC terminations are also available. Consult factory for catalog number callout.

**2 ACTUATOR STYLE<sup>4</sup>**

1S	Angular/Smooth Face Gloss <sup>1</sup>
1C	Angular/Cross Serations Gloss <sup>1</sup>
1L	Angular/Longline Serations Gloss <sup>1</sup>
6M	Curved/Smooth Face Matte <sup>3</sup>
6S	Curved/Smooth Face Gloss <sup>3</sup>
7S	Rounded Paddle/Smooth Face Gloss <sup>2</sup>

**3 ACTUATOR COLOR<sup>11</sup>**

BL black WH white RD red

**4 LENS COLOR<sup>13</sup>**

AM	amber	RC	red	GN	green <sup>7</sup>
LU	blue <sup>7</sup>	CL	clear	WH	white

**5 BRACKET STYLE<sup>11</sup>**

NBL	Nylon Black
WBL	Watershedding Black <sup>5</sup>
MBL	Marine Style Black <sup>5, 6</sup>
FN	Metal Snap-In <sup>4, 6</sup>
FN BLK	Black Metal Snap-In <sup>4, 6</sup>
FN SS	Stainless Steel Snap-In <sup>4, 6</sup>

**6 LAMP VOLTAGE**

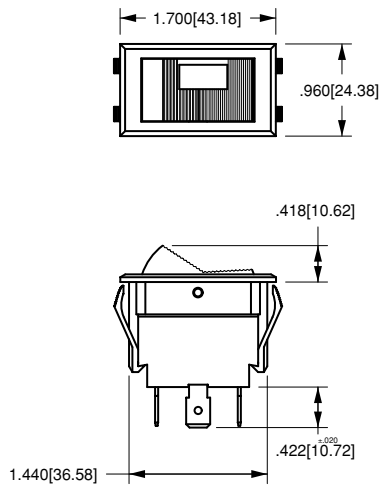
**incandescent**

125N 125 volt 250N 250 volt

**neon<sup>9</sup>**

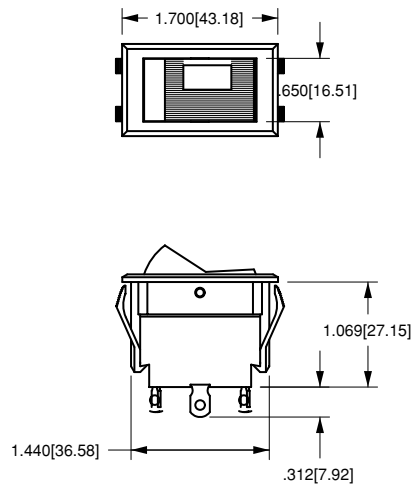
6V	6 volt	12V	12 volt	18V	18 volt
24V	24 volt	28V	28 volt		

**1C**  
CROSS-LINE W/ONE LENS



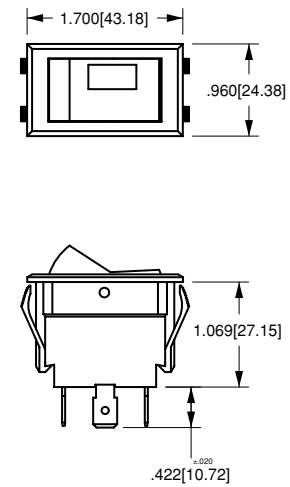
WITH .250 TAB  
TERMINALS  
AND NBL BRACKET

**1L**  
LONG-LINE W/ONE LENS



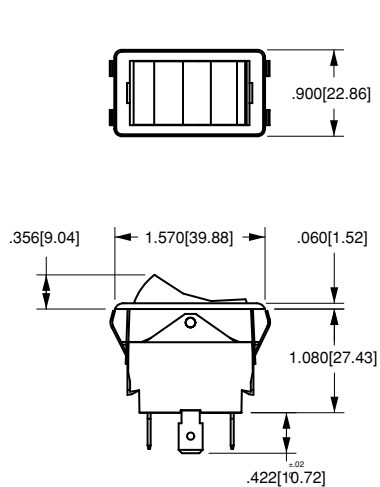
WITH SOLDER LUG  
TERMINAL  
AND NBL BRACKET

**1S**  
SMOOTH W/ONE LENS



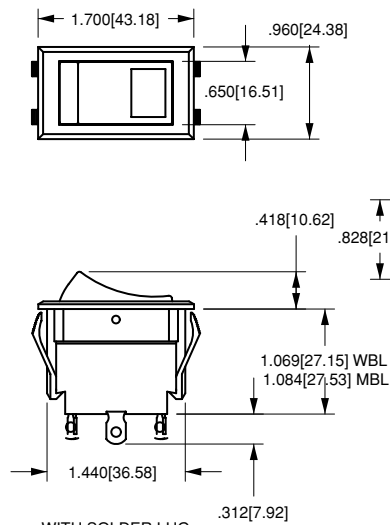
WITH .250 TAB  
TERMINALS  
AND NBL BRACKET

**1F**  
FLATTED STYLE NO LENS



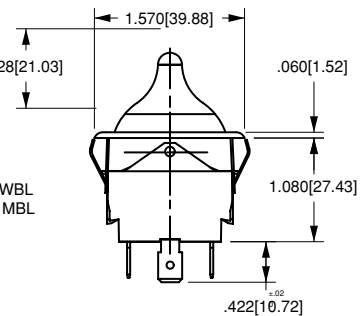
WITH .250 TAB  
TERMINALS  
AND FN BRACKET

**6M, 6S**  
CURVED W/ONE LENS



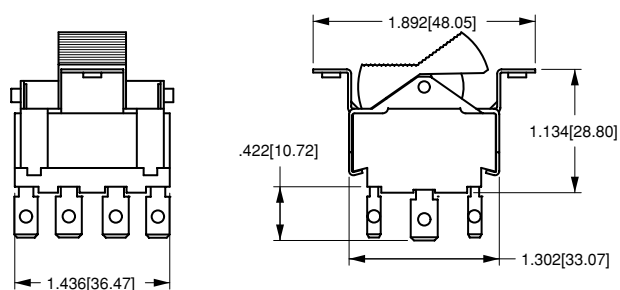
WITH SOLDER LUG  
TERMINALS  
AND WBL/MBL BRACKET

**7S**  
TOGGLE-STYLE W/ONE LENS

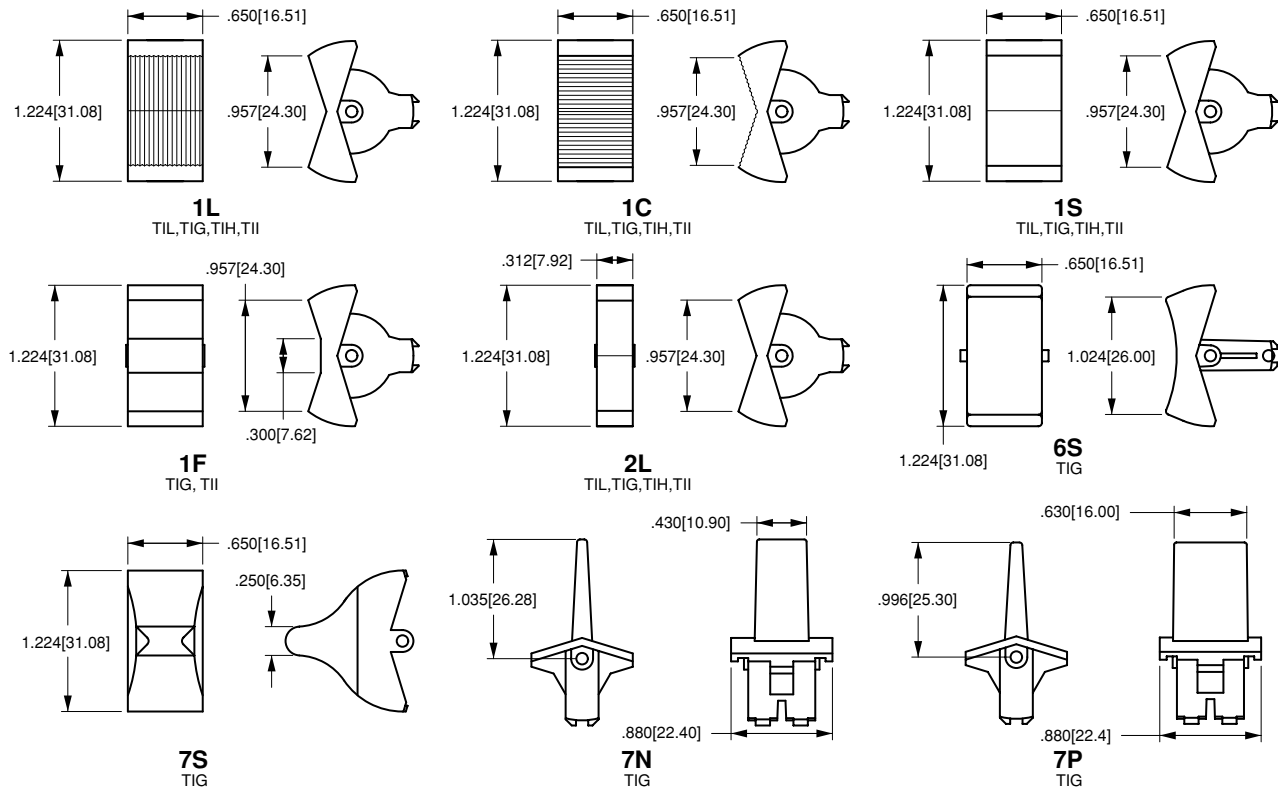
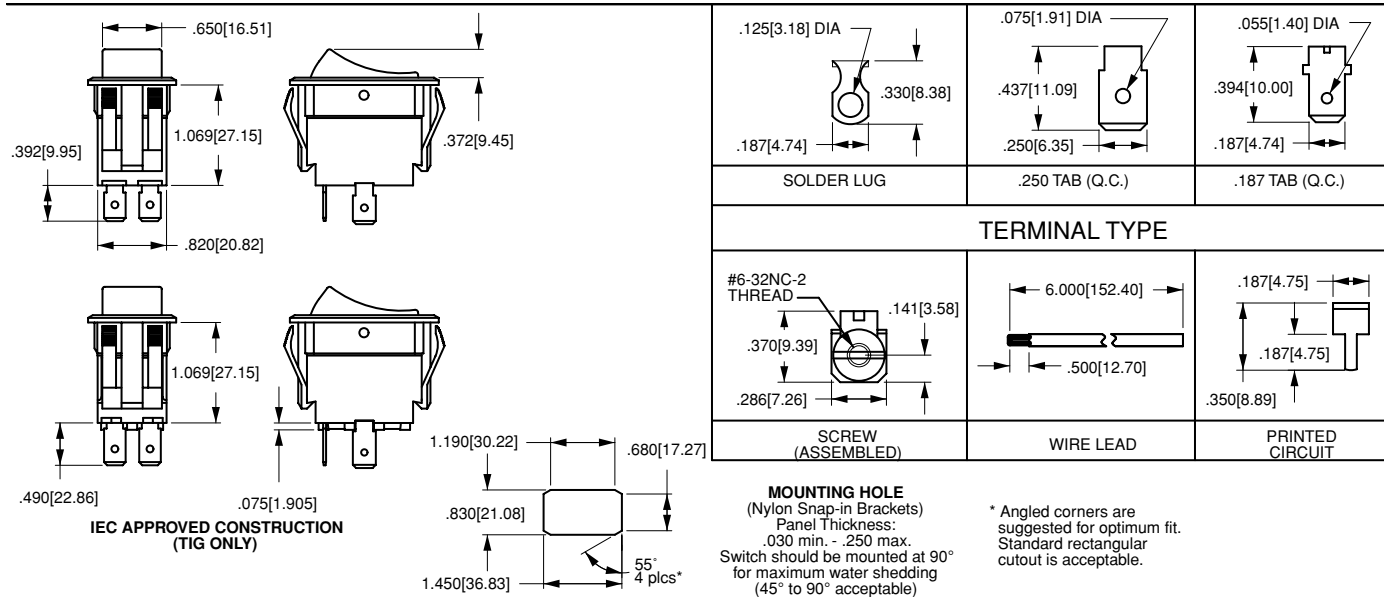


WITH .250 TAB  
TERMINALS  
AND FN BRACKET

**1C**  
TII-SERIES CROSS-LINE W ONE LENS



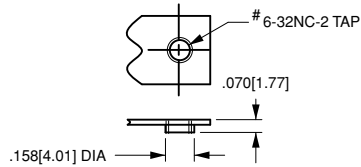
WITH .250 TAB TERMINALS AND A BRACKET

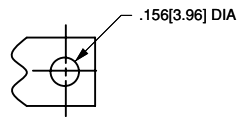


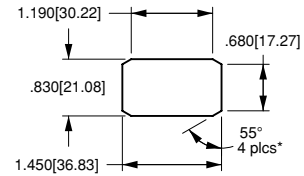
### Special Circuits for Tippet Rocker Switches

Circuit	Position 1	Position 2	Position 3
Progressive Two Circuit			
GG	BOTH CIRCUITS ON	ONE CIRCUIT ON	OFF
GG	BOTH CIRCUITS (ON)	ONE CIRCUIT ON	OFF
Single Pole Triple Throw			
GE	ON	ON	ON
Two Circuit			
GH	CIRCUIT 1 ON	BOTH CIRCUITS ON	CIRCUIT 2 ON
GP	CIRCUIT 2 ON	CIRCUIT 1 ON	OFF
Reversing Double Pole Double Throw			
GO	ON	OFF	ON
GX	ON	NONE	ON

( ) Indicates momentary function.

**Dimensional Specifications: in. [mm]**

**TAPPED HOLE**

 Standard with  
A & B Brackets

**CLEARANCE HOLE**

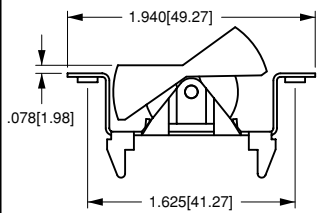
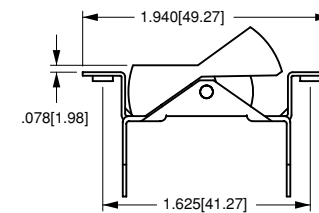
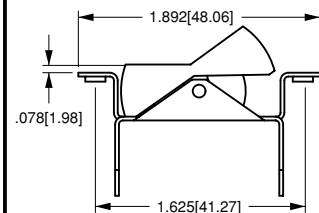
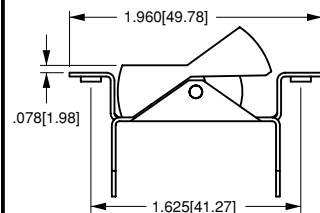
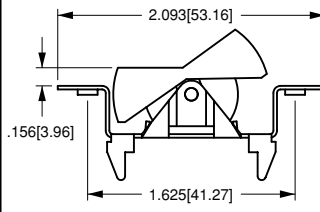
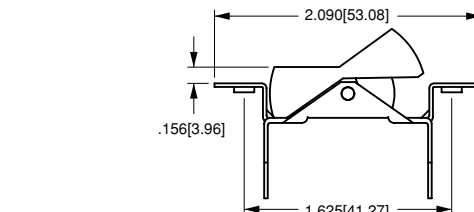
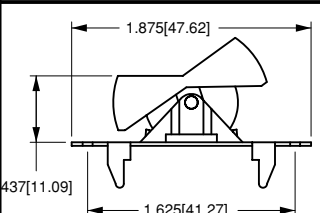
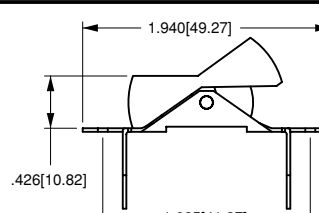
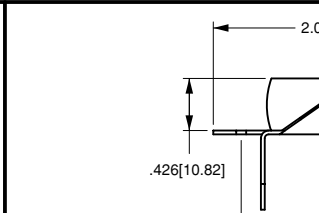
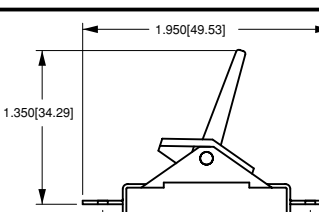
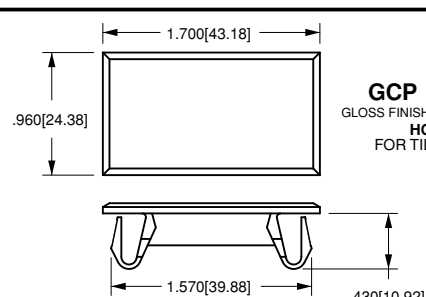
 Standard with  
C Bracket

**MOUNTING HOLE**

(Nylon Snap-in Brackets)

Panel Thickness:

.030 min. - .250 max.

\* Angled corners are suggested for optimum fit. Standard rectangular cutout is acceptable.

TIL	TIG	TII	TIH
 <p><b>A</b> TIL</p>	 <p><b>A</b> TIG</p>	 <p><b>A</b> TII</p>	 <p><b>A</b> TIH</p>
 <p><b>B</b> TIL</p>	 <p><b>B</b> TII, TIG</p>		
 <p><b>C*</b> TIL</p>	 <p><b>C</b> TIG</p>	 <p><b>C</b> TIH, TII</p>	
	 <p><b>H</b> TIG</p>	 <p><b>GCP / GMP</b> GLOSS FINISH / MATTE FINISH <b>HOLE PLUG</b> FOR TIL, TIG, TIH &amp; TII</p>	

